

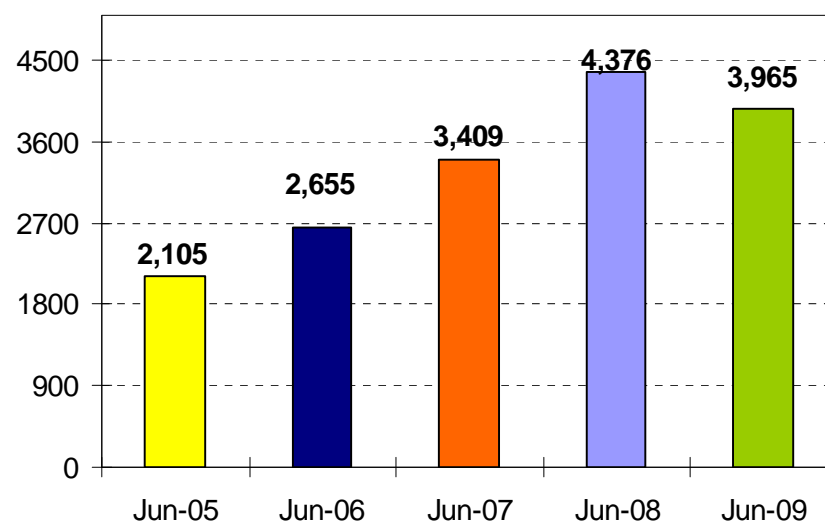
airBaltic

Monthly Operational Statistics

June 2009

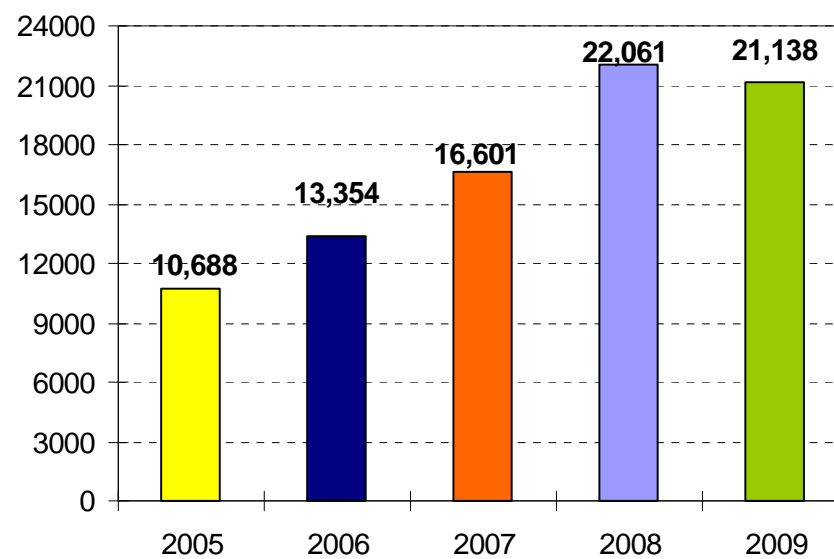
Number of Flights: June 2009

– 9% change compared to the same period last year



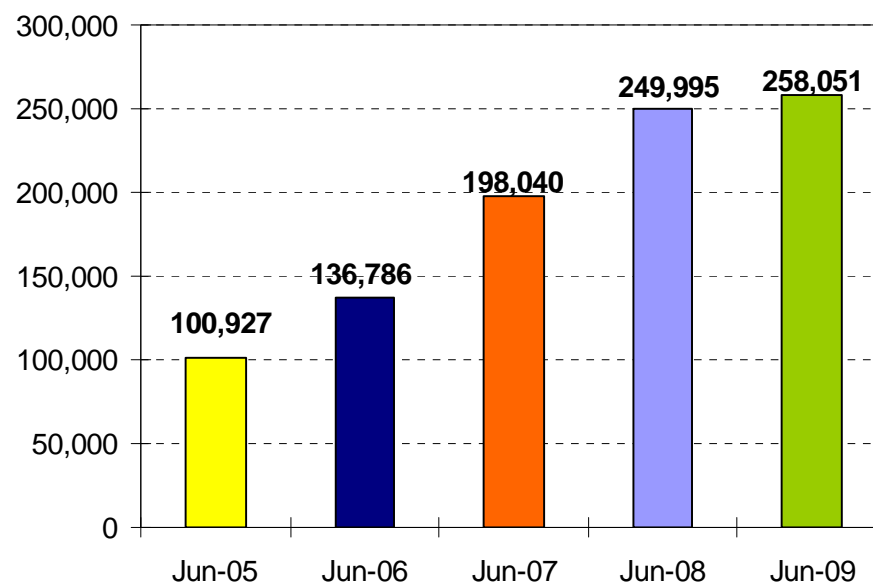
Number of Flights: January–June 2009

– 4% change compared to the same period last year



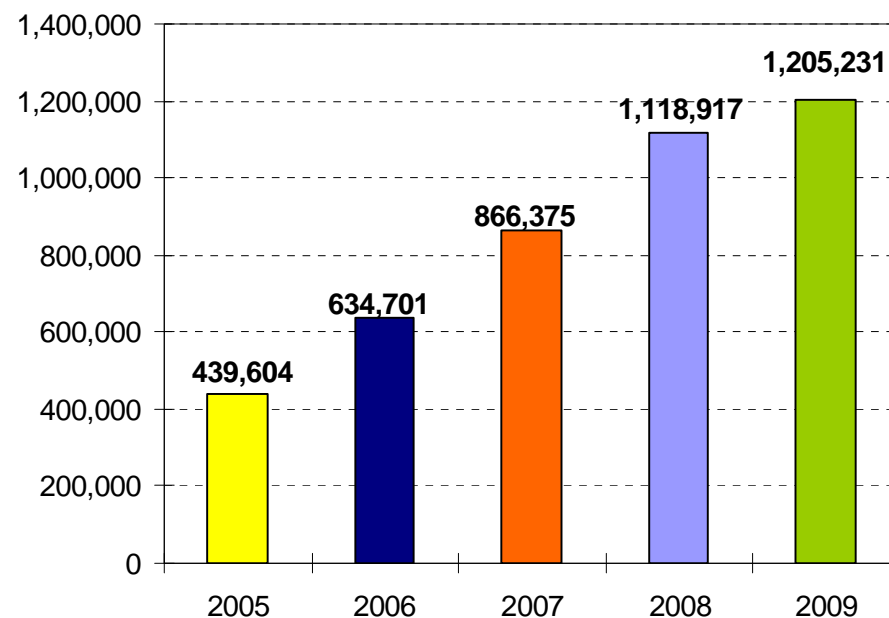
Number of Passengers: June 2009

+ 3% change compared to the same period last year



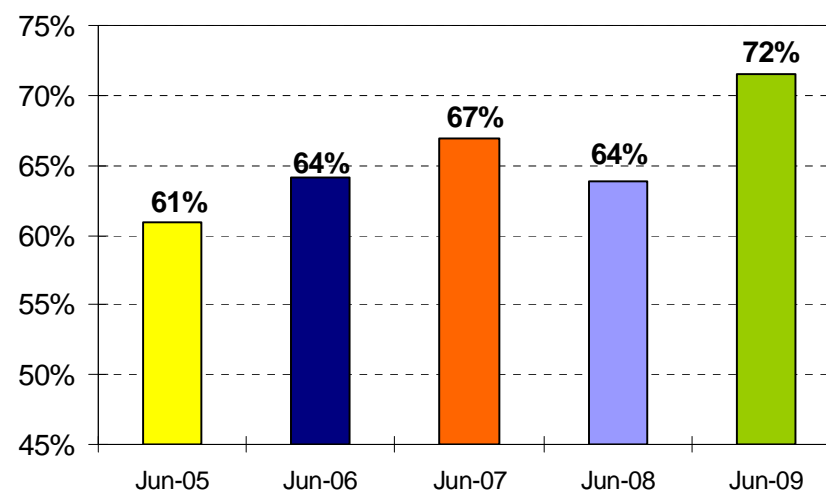
Number of Passengers: January–June 2009

+ 8% change compared to the same period last year



Load Factor: June 2009

+ 8% point compared to the same period last year



Load Factor: January–June 2009

+ 7% points compared to the same period last year

