



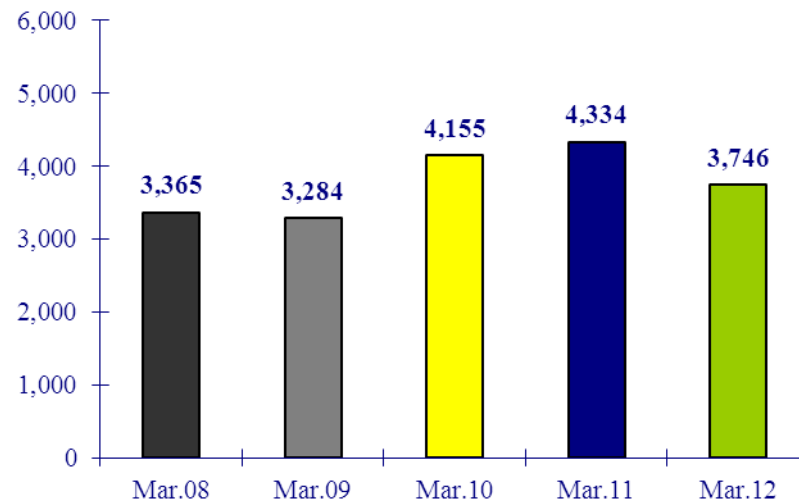
airBaltic

Monthly Operational Statistics

March 2012

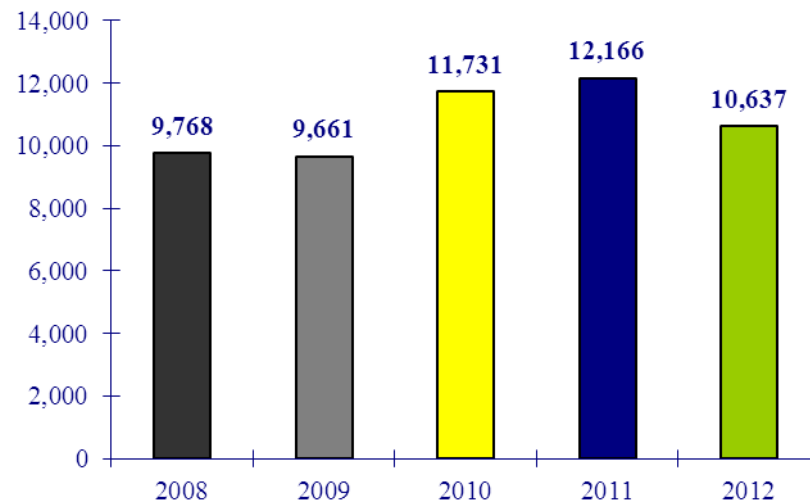
Number of Flights: March 2012

-14% compared to the same period last year



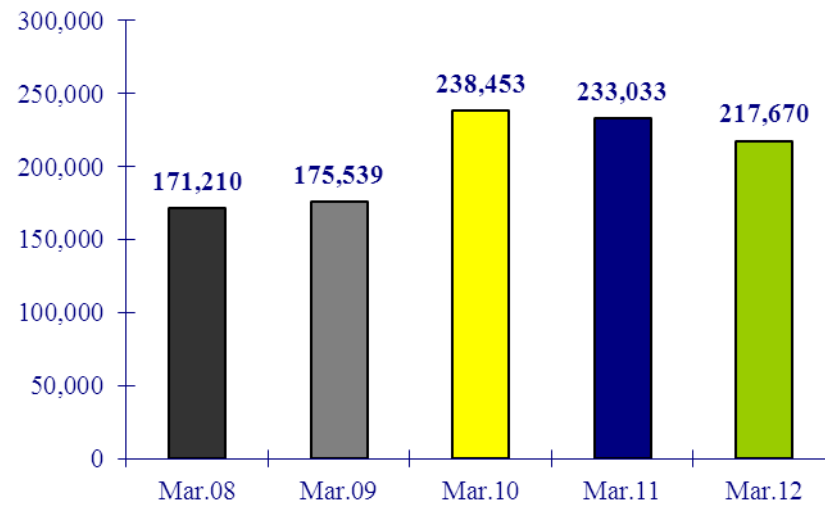
Number of Flights: January - March 2012

-13% compared to the same period last year



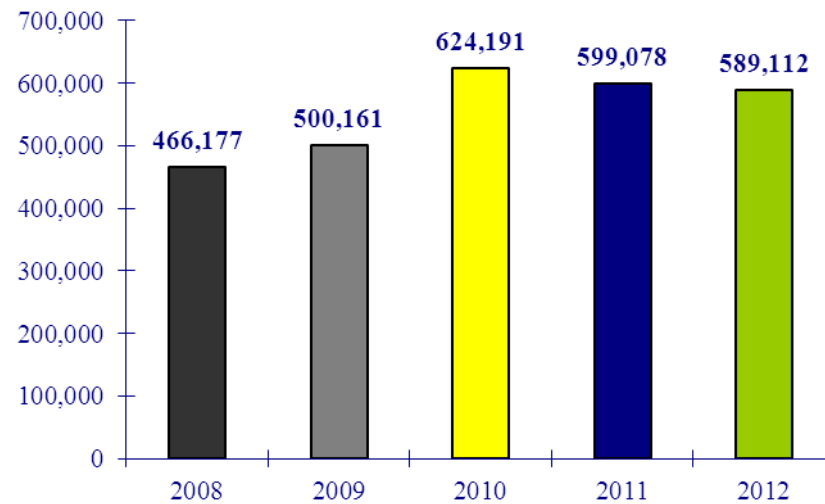
Number of Passengers: March 2012

-7% compared to the same period last year



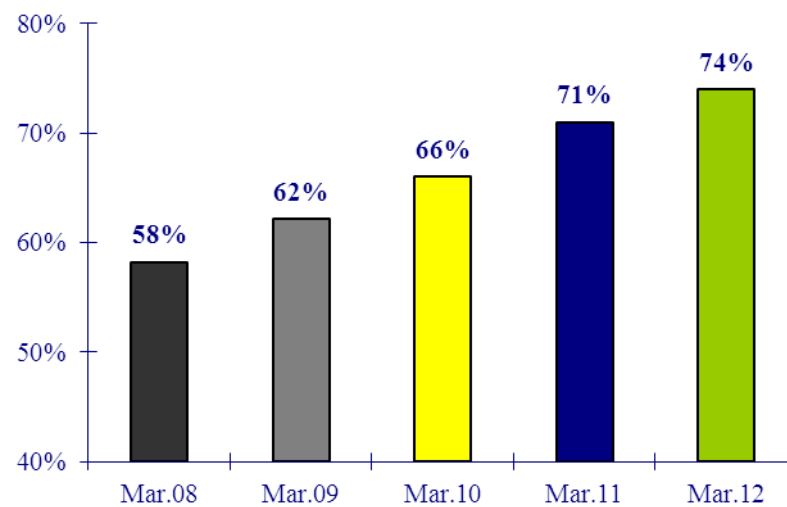
Number of Passengers: January - March 2012

-2% compared to the same period last year



Load Factor: March 2012

+3 p.p. compared to the same period last year



Load Factor: January - March 2012

+6 p.p. compared to the same period last year

