



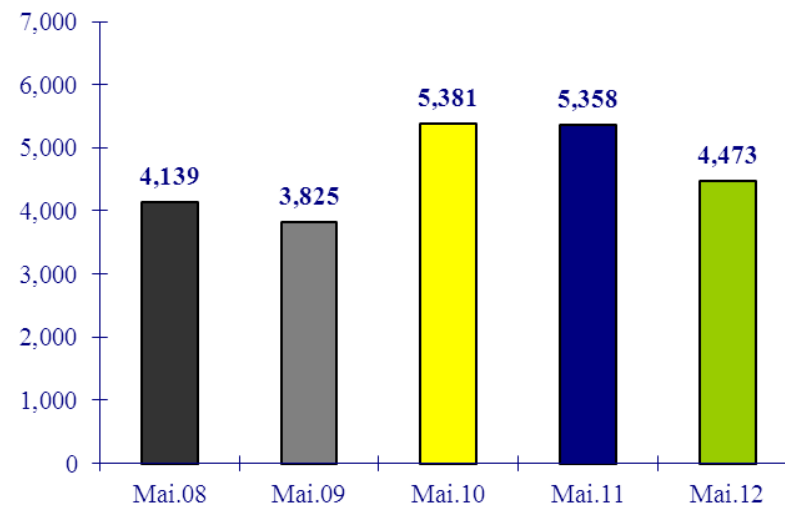
# **airBaltic**

## **Monthly Operational Statistics**

**May 2012**

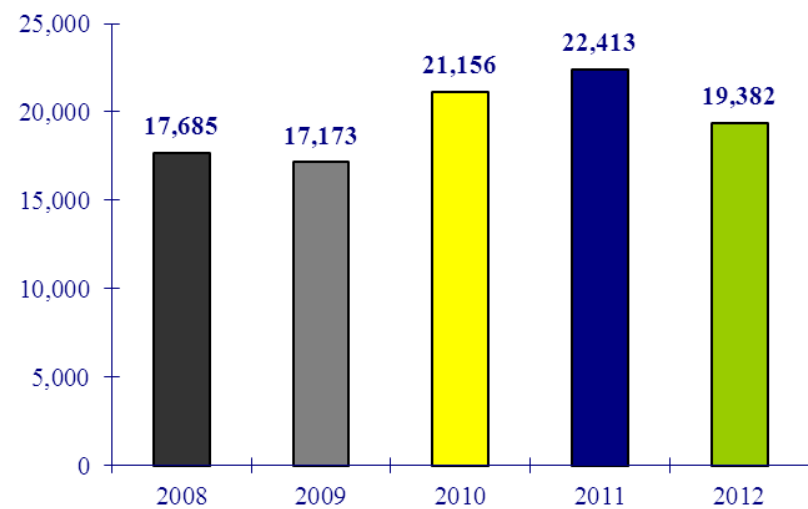
## Number of Flights: May 2012

-17% compared to the same period last year



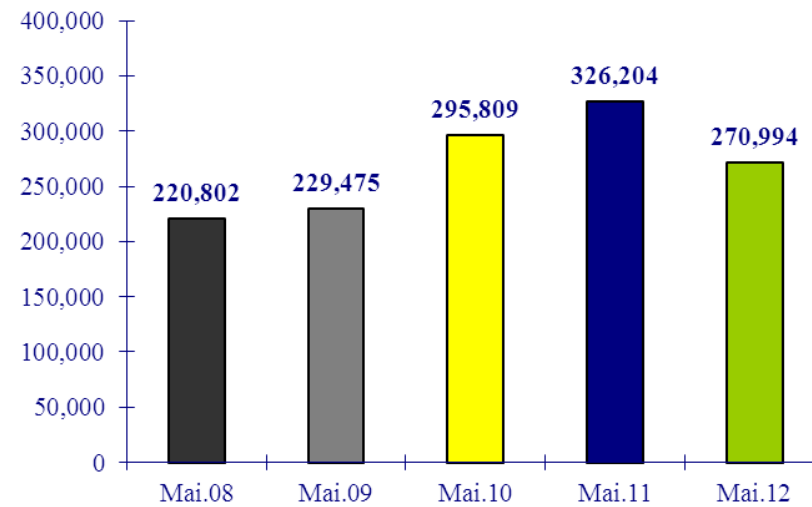
## Number of Flights: January - May 2012

-14% compared to the same period last year



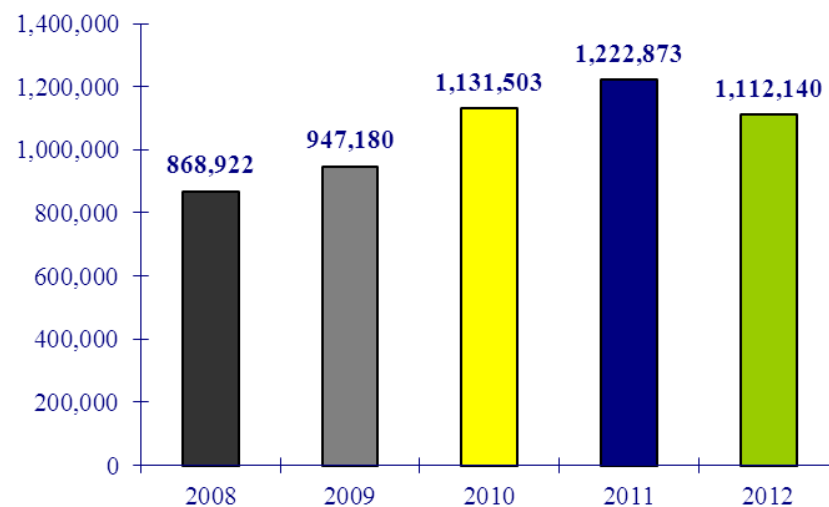
## Number of Passengers: May 2012

-17% compared to the same period last year



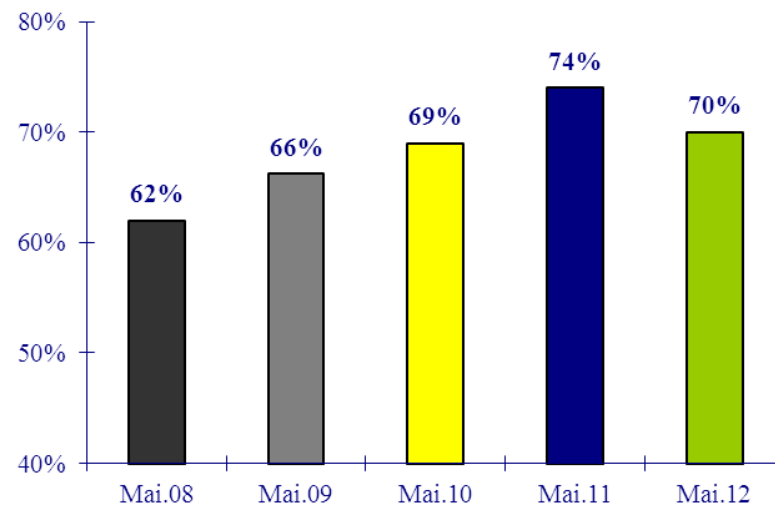
## Number of Passengers: January - May 2012

-9% compared to the same period last year



## Load Factor: May 2012

-4 p.p. compared to the same period last year



## Load Factor: January - May 2012

+1 p.p. compared to the same period last year

