



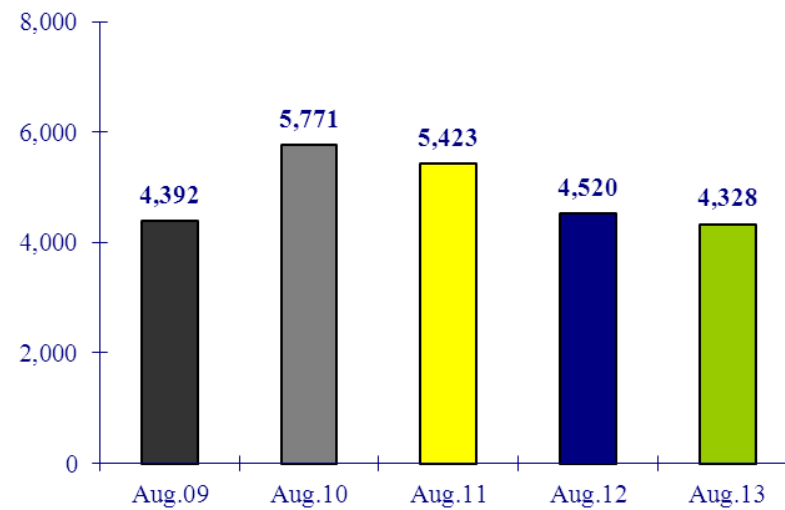
airBaltic

Monthly Operational Statistics

August 2013

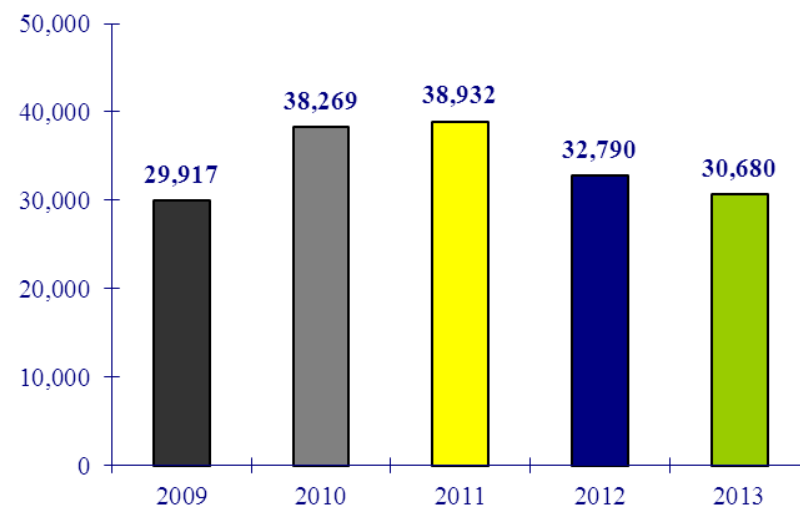
Number of Flights: August 2013

-4% compared to the same period last year



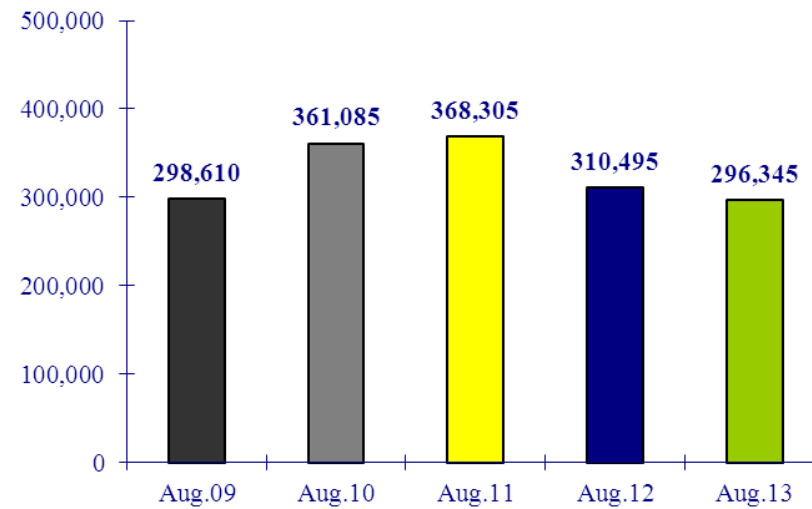
Number of Flights: January - August 2013

-6% compared to the same period last year



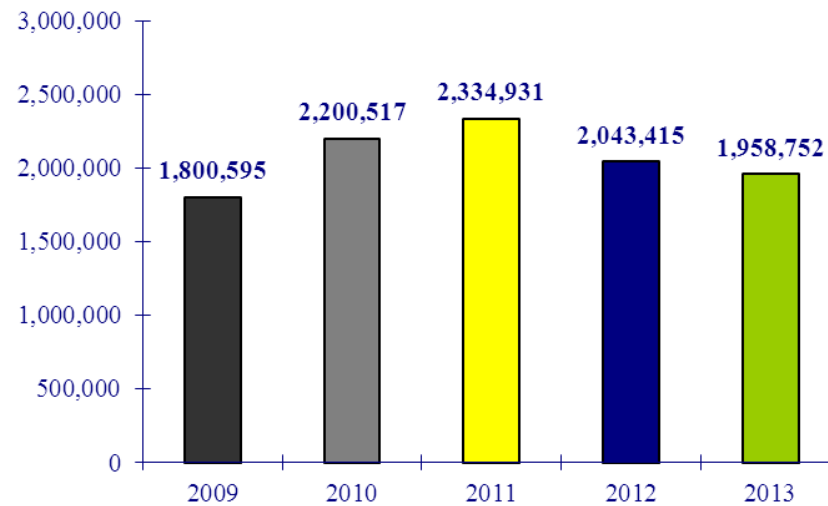
Number of Passengers: August 2013

-5% compared to the same period last year



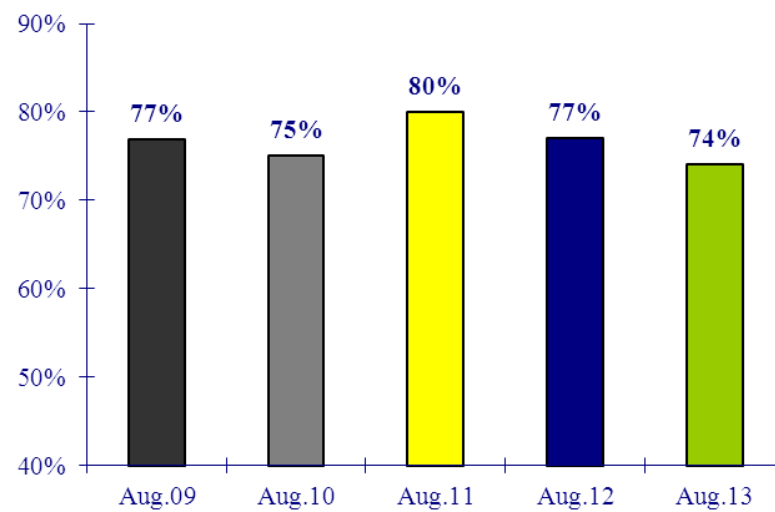
Number of Passengers: January - August 2013

-4% compared to the same period last year



Load Factor: August 2013

-3p.p. compared to the same period last year



Load Factor: January - August 2013

-3p.p. compared to the same period last year

